

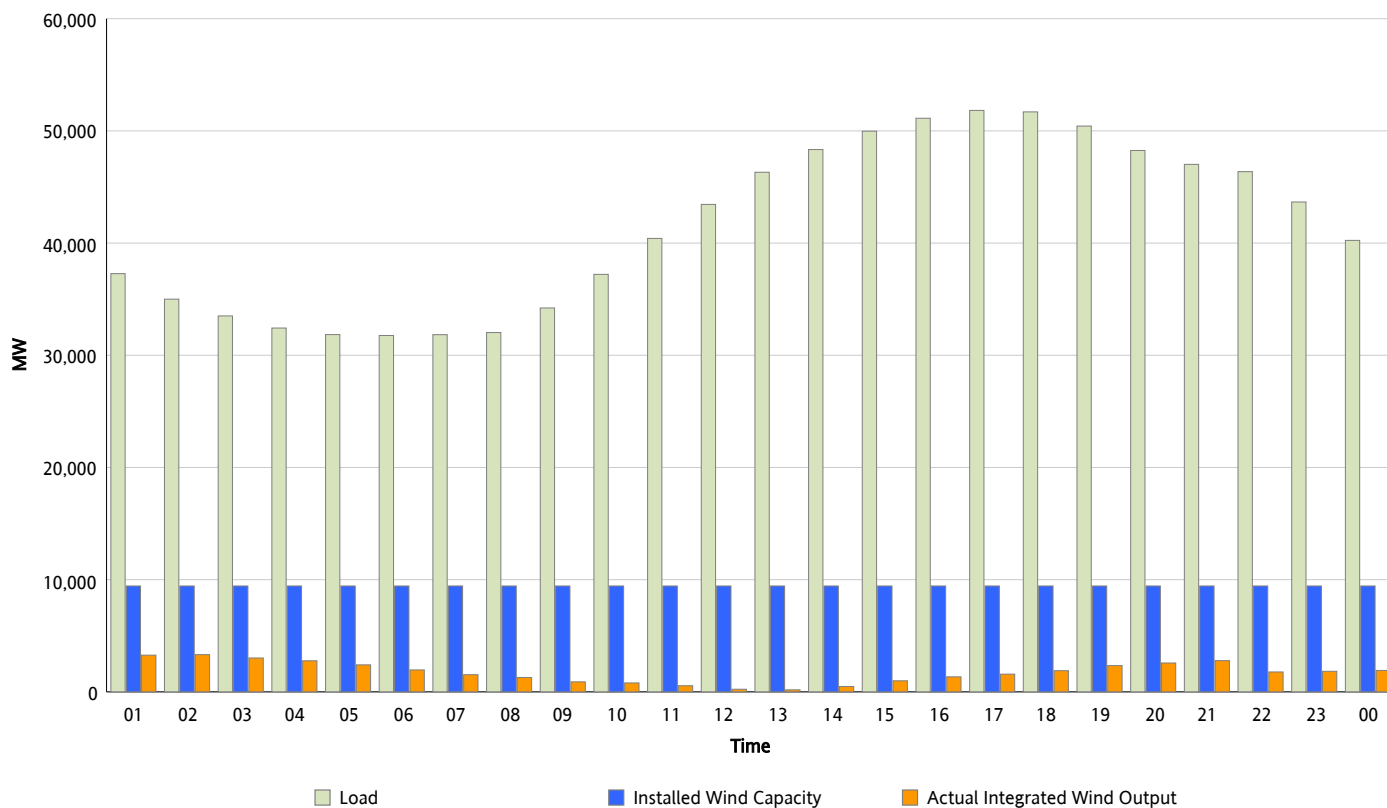


ERCOT Grid Operations

Wind Integration Report : 07/08/2012

Peak Load	51,826 MW
Load Peak Hour (HE)	17
Wind Over Peak	1,580 MW
Wind Record 06/19/12	8,368 MW
Max Wind Value*	3,395 MW
Wind Peak Time	01:31
Wind Integration %	9.72 %

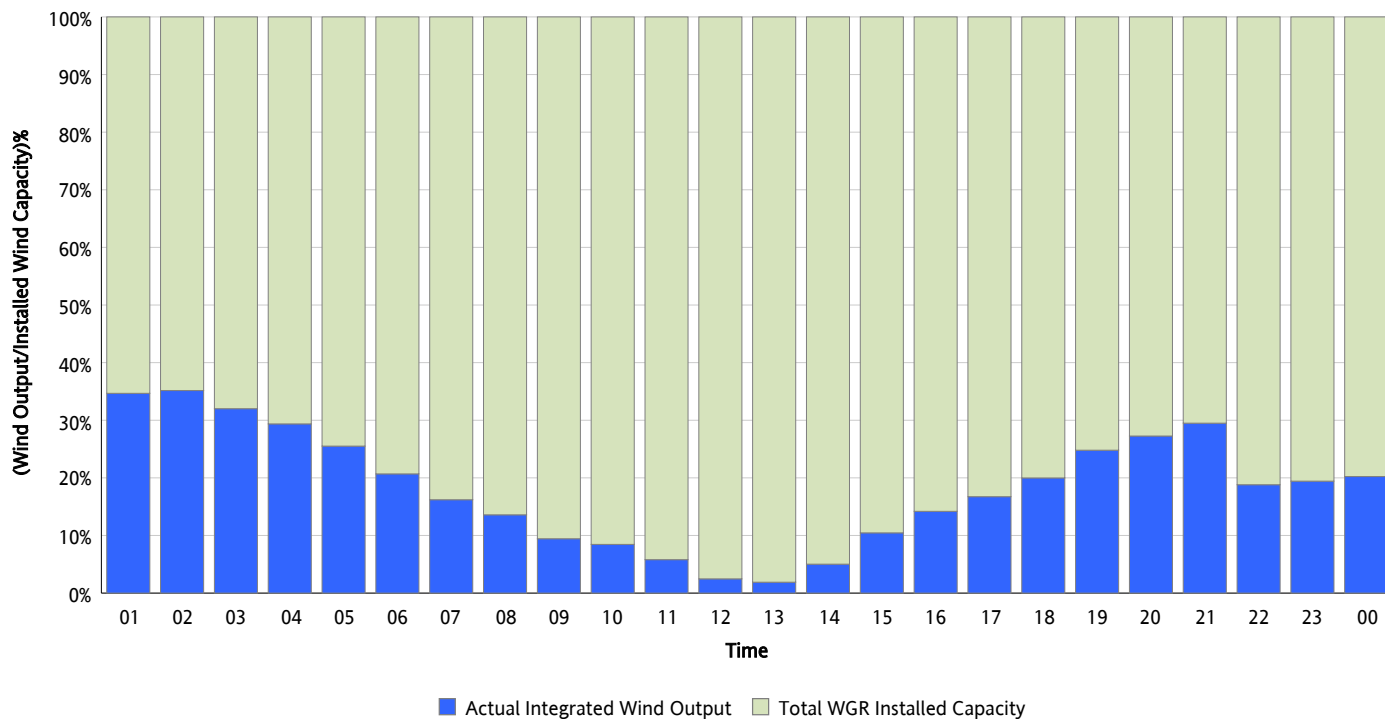
Hourly Average Actual Load vs. Actual Wind Output
07/08/2012



** Wind Record and Wind Max represent instantaneous values and the rest of the values are integrated over the hour*

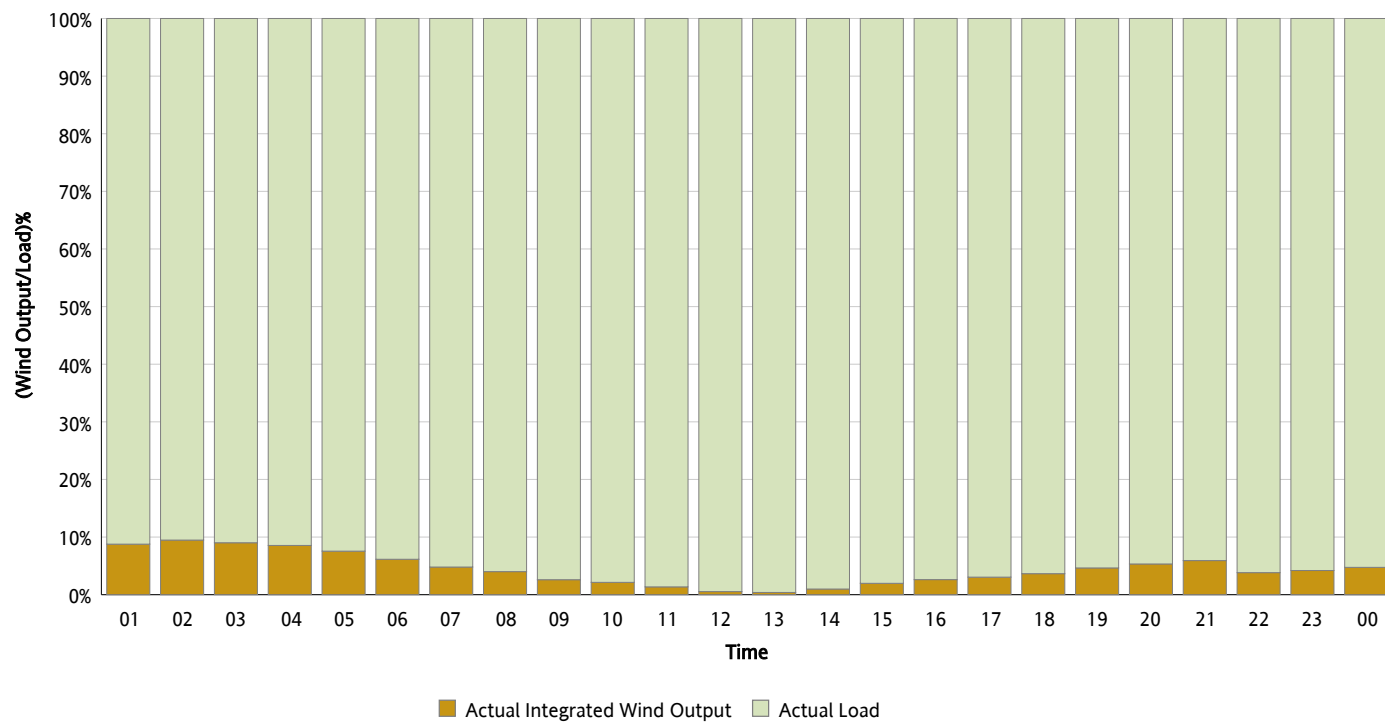
Actual Wind Output as a Percentage of the Total Installed Wind Capacity

07/08/2012



Actual Wind Output as a Percentage of the ERCOT Load

07/08/2012



ERCOT Load vs. Actual Wind Output

07/01/2012 - 07/08/2012

